



RUNWAY REPORT




WOMEN'S EDIT

LAKMÉ FASHION  
WEEK X FDCI



**ICH NEXT<sup>®</sup>**

OCTOBER 2025,  
DELHI



## About the Runway Trend Report

Welcome to our comprehensive Runway Trend Report, meticulously crafted for industry professionals and fashion enthusiasts eager to delve into the macro trends shaping the fashion landscape. Brought to you by ICH, this report serves as an analytical and objective exploration of the prevailing themes and innovations that have emerged from the latest fashion week.

Our intent is to provide a detailed examination of the trends that are not only influencing current fashion narratives but are also poised to impact future collections and consumer preferences. By dissecting these trends, we aim to equip designers, retailers, and fashion aficionados with the insights necessary to navigate the ever-evolving fashion ecosystem. In this report, you will find a thorough analysis of key trends on colour, pattern and thematic styling, supported by visuals and expert commentary, to offer a holistic view of the fashion industry's direction.

Our objective approach ensures that the information presented is unbiased and grounded in factual observations, allowing you to make informed decisions and strategic plans. We invite you to explore the pages ahead and immerse yourself in the dynamic world of fashion trends, armed with the knowledge to anticipate and adapt to the industry's ever-changing landscape.

LAKMÉ`  
FASHION  
WEEK  
X FDCI

# Summary:

Women's wear at the Lakmé Fashion Week X FDCI, October 2025 edition, reflected a season of introspection and reinvention. Designers explored emotion through craft, blending fantasy with function and nostalgia with innovation. Themes like decay, metamorphosis and childhood innocence shaped collections that celebrated imperfection, transformation and play. From maximal embellishments to rustic handwork and soft romanticism, each narrative emphasized individuality and artistry. The season highlighted a growing shift toward tactile storytelling, mindful materiality, and expressive silhouettes, where creativity and consciousness coexist. As fashion evolves, this dialogue between memory and modernity continues to redefine what luxury truly means today.

OCTOBER  
2025,  
DELHI



A cosmic narrative unfolded on the runway, where craft met cosmos and design became a dialogue between human imagination and celestial mystery. Capturing the spirit of fantastical futurism, the theme saw structured silhouettes, metallic textiles, and engineered forms take centre stage. Reimagining couture as a field of exploration, designers played with scale, light and movement, using fabrics that shimmered like starlit skies and curved with fantasy.

Rooted in experimentation yet grounded in craftsmanship, the theme celebrated the alchemy of material and imagination where Indian artistry looks skyward, tracing the path from reflection to radiance, from fabric to future.





UBER TREND 02

The runway shimmered with the unapologetic opulence of Gatsby glamour – an ode to the roaring twenties reimagined for the modern muse. Designers drew inspiration from the age of indulgence, where sequins met champagne sparkle and every silhouette spoke of revelry and rebellion. From fluid metallic gowns and tasselled fringes to feathered boleros and drop-waist drapes, the mood was decadence in motion.

A symphony of shimmer and structure unfolded – corseted bodices met art-deco embellishments, while sleek satin and sculpted lace revived the spirit of vintage soirées. Balancing nostalgia with nouveau allure, the trend celebrated a woman who owns the night – elegant yet daring, timeless yet electric. With every step, the runway became a ballroom, and fashion, a toast to eternal glamour.



Disclaimer: Images displayed on the pages are not claimed to be created by or owned by the author and are provided by The Voice of Fashion for the sole purpose of representation of our review and analysis and meant for reference purpose only; not to be duplicated or published further in any manner (Read Terms of Use). The author is not responsible for the further distribution of this content beyond the intended parties. Confidentiality: The content is confidential and is not to be shared with or transferred to any third party or displayed publicly. Disclaimer: The PANTONE® Reference names and/or numbers are from the PANTONE FASHION, HOME + INTERIORS color system (a component of the PANTONE Textile Color System®). The colors shown here are on-screen simulations and may not match the PANTONE Color Standards. For accurate PANTONE Color Standards, refer to current editions of PANTONE FASHION, HOME + INTERIORS Swatch Cards. PANTONE is a trademark or registered trademark of Pantone LLC in the United States and/or other countries. Portions © Pantone LLC, 2020. Pantone's trademarks and copyrights used with the permission of Pantone LLC under License Agreement with ICH Creative Consulting LLP.



UBER TREND 03

This season, designers unearthed the grandeur of ornamentation in its most unapologetic form. The runway shimmered under the weight of wealth, power and craftsmanship, where embellishment wasn't an accent, but the very essence of the ensemble. Gemstones, glass beads, crystals and metal brooches were not merely adornments; they became the fabric itself, forming surfaces that gleamed like sculpted treasure, but with an almost primitive, tribal aesthetic. Each look spoke in a language of ancient meets contemporary decadence – bold, commanding and gloriously excessive. The theme became a statement on runway where artistry met affluence and the body transformed into a jewel itself.

PANTONE®  
13-0919

PANTONE®  
17-1446

PANTONE®  
19-1321

PANTONE®  
20-0008

PANTONE®  
17-5528



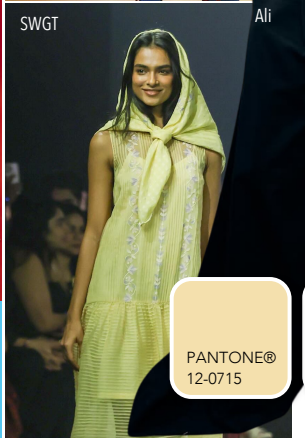
UBER TREND 04

Brimming with nostalgia and the innocence of childhood, this theme takes cue from the global “kidulting” trend – a celebration of carefree joy, boundless imagination and the playful spirit of youth. Reimagining grown-ups in kidswear, collections unfolded through a vivid palette of pinks, yellows, sky blues and candy reds, punctuated by strategical hints of school-uniform blue. Silhouettes embraced daring pairings and whimsical layering – beanies, twin braids, chappals and crochet details lending a handcrafted warmth. Each look mirrored the comfort and simplicity of children’s clothing yet carried the finesse of refined tailoring.

On the runway, models smiled with the mischief of confident kids or radiated the shy sweetness of innocence, making nostalgia feel alive again. Blending the purity of childhood aesthetics with the poise of adulthood, this trend becomes a heartfelt reminder of growth.



Pinky Promise





UBER TREND 05

This season runway celebrated the spirit of cross-cultural craftsmanship, where textiles, traditions and techniques travelled freely, unbound by geography. The mood reimaged the heritage of the Global South through a contemporary lens, creating a dialogue between the local and the universal. Rooted in slow fashion and artisanal depth, the narrative unfolds through layered silhouettes, handwoven textiles and richly patterned surfaces that merge geometric motifs, tribal prints, and architectural weaves. Each ensemble feels like a tapestry of journeys , blending timeless crafts with urban edge and roots with modernity. A world where fashion becomes a shared language, connecting craft communities, generations and even continents through the common thread of creativity.

PANTONE®  
19-3750

PANTONE®  
20-0008

PANTONE®  
19-0303

PANTONE®  
19-1242

PANTONE®  
18-1453

Disclaimer: Images displayed on the pages are not claimed to be created by or owned by the author and are provided by The Voice of Fashion for the sole purpose of representation of our review and analysis and meant for reference purpose only; not to be duplicated or published further in any manner (Read Terms of Use). The author is not responsible for the further distribution of this content beyond the intended parties. Confidentiality: The content is confidential and is not to be shared with or transferred to any third party or displayed publicly. Disclaimer: The PANTONE® Reference names and/or numbers are from the PANTONE FASHION, HOME + INTERIORS color system (a component of the PANTONE Textile Color System®). The colors shown here are on-screen simulations and may not match the PANTONE Color Standards. For accurate PANTONE Color Standards, refer to current editions of PANTONE FASHION, HOME + INTERIORS Swatch Cards. PANTONE is a trademark or registered trademark of Pantone LLC in the United States and/or other countries. Portions © Pantone LLC, 2020. Pantone's trademarks and copyrights used with the permission of Pantone LLC under License Agreement with ICH Creative Consulting LLP.



UBER TREND 06

A meditation on transience, this season designers found beauty in the breakdown where textures unravel, pigments fade, and forms surrender to time. The theme explores nature’s quiet chaos, translating erosion, rust, and regeneration into layered textiles, intricate surface artistry, and tactile silhouettes. Drapes flow like withering leaves, frayed edges mimic the poetry of aging, and earthy tones meet oxidized beads to echo the rhythm of transformation. Each ensemble feels alive with imperfections, raw, irregular, yet profoundly grounded. Through pleats, crinkles, and fragmented surfaces, the narrative celebrates life in transition, how things fall apart only to find new form. This theme draws inspiration from the beauty of death and decay, a reflective pause on the runway that views deterioration as a rebeginning, where newly explored surfaces breathe through layers of chaos and aesthetics grow from what time leaves behind.



Disclaimer: Images displayed on the pages are not claimed to be created by or owned by the author and are provided by The Voice of Fashion for the sole purpose of representation of our review and analysis and meant for reference purpose only; not to be duplicated or published further in any manner (Read Terms of Use). The author is not responsible for the further distribution of this content beyond the intended parties. Confidentiality: The content is confidential and is not to be shared with or transferred to any third party or displayed publicly. Disclaimer: The PANTONE® Reference names and/or numbers are from the PANTONE FASHION, HOME + INTERIORS color system (a component of the PANTONE Textile Color System®). The colors shown here are on-screen simulations and may not match the PANTONE Color Standards. For accurate PANTONE Color Standards, refer to current editions of PANTONE FASHION, HOME + INTERIORS Swatch Cards. PANTONE is a trademark or registered trademark of Pantone LLC in the United States and/or other countries. Portions © Pantone LLC, 2020. Pantone's trademarks and copyrights used with the permission of Pantone LLC under License Agreement with ICH Creative Consulting LLP.





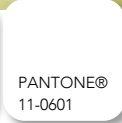
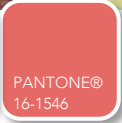
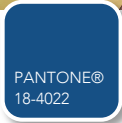
## UBER TREND 07

The runway unfolded in soft blooms and soaring silhouettes through a poetic ode to cocoons, wings & petals. Designers drew from nature's most delicate architecture – buds, blossoms and feathered creatures. Translating their organic geometry into bold, sculptural forms, every fold, pleat and curve carried the grace of petals unfurling or a cocoon unravelling or wings taking flight.

Textures ranged from organza satins to sculpted scubas echoing fragility and strength. Colours bloomed in radiant pinks, rich violets and ethereal reds, celebrating the vividness of nature in its most powerful, liberated form. This theme blurred the line between flora and fauna, softness and statement, creating a visual language that fluttered between fantasy, form, and delicacy in a daring take.



# Flashback Frivolity



## UBER TREND 08

Rooted in pastoral romance and delicate femininity, this season's cottage core trend reimagines countryside charm through a poetic, Indian nostalgic lens. The trend embraces the art of slowing down through inclusions of handmade crafts, simple pleasures, and nostalgia wrapped in lace and linen. Flowing skirts, puffed sleeves and delicate bows evoke a sense of innocence, while checks, washed florals, and crochet textures breathe life into soft domestic nostalgia. Designers interpreted comfort with couture precision, soft gathers, smocked detailing and just simple knots on airy layers. The theme tells a story of femininity rooted in simplicity, where every outfit whispers of picnics in meadows, pages of old diaries, and quiet joy in the everyday.



# Colour Summary



Disclaimer: Images displayed on the pages are not claimed to be created by or owned by the author and are provided by The Voice of Fashion for the sole purpose of representation of our review and analysis and meant for reference purpose only; not to be duplicated or published further in any manner (Read Terms of Use). The author is not responsible for the further distribution of this content beyond the intended parties. Confidentiality: The content is confidential and is not to be shared with or transferred to any third party or displayed publicly. Disclaimer: The PANTONE® Reference names and/or numbers are from the PANTONE FASHION, HOME + INTERIORS color system (a component of the PANTONE Textile Color System®). The colors shown here are on-screen simulations and may not match the PANTONE Color Standards. For accurate PANTONE Color Standards, refer to current editions of PANTONE FASHION, HOME + INTERIORS Swatch Cards. PANTONE is a trademark or registered trademark of Pantone LLC in the United States and/or other countries. Portions © Pantone LLC, 2020. Pantone's trademarks and copyrights used with the permission of Pantone LLC under License Agreement with ICH Creative Consulting LLP.



Pankaj and Nidhi

# Prune Brown

Prune browns took over the runway in a mood of sultry sophistication as deep wine tones layered with gloss, lace, and drape. Designers leaned into its nocturnal allure, blending opulent fabrics with sculpted silhouettes that celebrated power, sensuality and quiet decadence.

PANTONE®  
19-1317

PANTONE®  
19-1321

PANTONE®  
17-1446



Taneiya Khanuja



Pankaj & Nidhi



Inca



Tarun Tahiliani

Disclaimer: Images displayed on the pages are not claimed to be created by or owned by the author and are provided by The Voice of Fashion for the sole purpose of representation of our review and analysis and meant for reference purpose only; not to be duplicated or published further in any manner (Read Terms of Use). The author is not responsible for the further distribution of this content beyond the intended parties. Confidentiality: The content is confidential and is not to be shared with or transferred to any third party or displayed publicly. Disclaimer: The PANTONE® Reference names and/or numbers are from the PANTONE FASHION, HOME + INTERIORS color system (a component of the PANTONE Textile Color System®). The colors shown here are on-screen simulations and may not match the PANTONE Color Standards. For accurate PANTONE Color Standards, refer to current editions of PANTONE FASHION, HOME + INTERIORS Swatch Cards. PANTONE is a trademark or registered trademark of Pantone LLC in the United States and/or other countries. Portions © Pantone LLC, 2020. Pantone's trademarks and copyrights used with the permission of Pantone LLC under License Agreement with ICH Creative Consulting LLP.



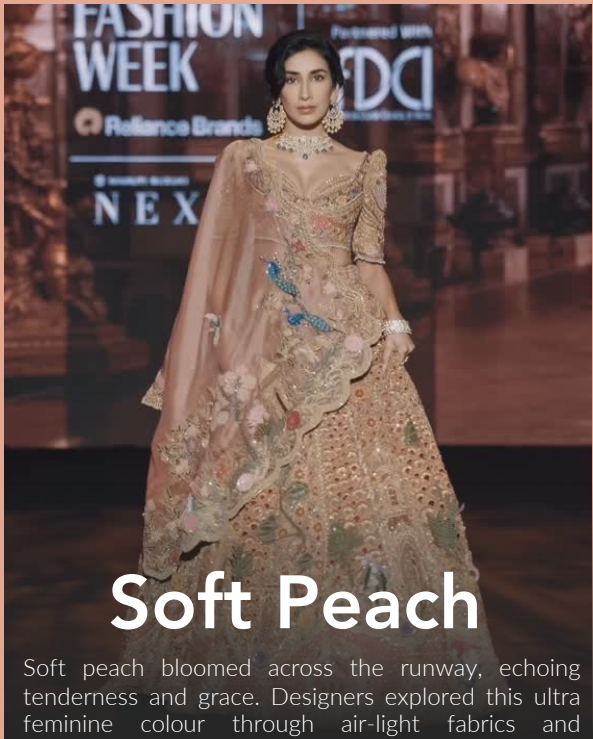


This unusual combination of earth and silver formed an alloy-like palette this season. Designers explored this blend through structured layers, reflective textures and fluid drapes, evoking a mood that was both industrial and organic, grounded yet futuristic.

PANTONE®  
20-0008







# Soft Peach

Soft peach bloomed across the runway, echoing tenderness and grace. Designers explored this ultra feminine colour through air-light fabrics and weightless volume. Explored in occasion and day wear the tone effortlessly added a sense of purity and lightness to skilfully-crafted ensembles.

PANTONE®  
14-1419

PANTONE®  
12-1011

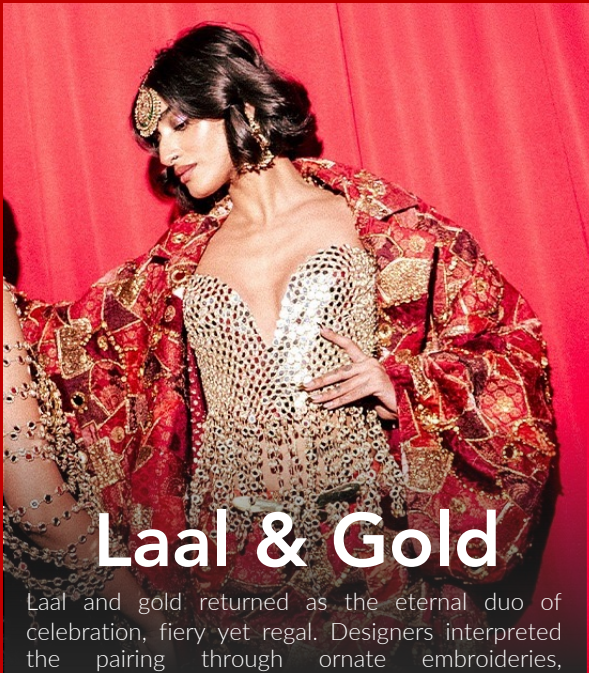


Samant Chauhan

Gaach

AK-OK

Taneiya Khanuja



## Laal & Gold

Laal and gold returned as the eternal duo of celebration, fiery yet regal. Designers interpreted the pairing through ornate embroideries, bejewelled textures and brocades. The palette glowed with heritage while subtly redefining the traditional bride with new-age shapes and opulence.

PANTONE®  
18-1453

PANTONE®  
19-1531

PANTONE®  
20-0037



Papa Don't Preach

Sanjukta Dutta

lthr

Jigar & Nikita





# Moss & Foliage

A lush fusion of moss greens, rustic browns and wet foliage offered a nature-inspired palette that captured both decay and renewal. Interpreted through textured layers, foliage-inspired embroidery and on classic silhouettes, the palette moved fluidly between modern refinement and untamed wilderness.

PANTONE®  
19-0220

PANTONE®  
18-0940

PANTONE®  
16-0550

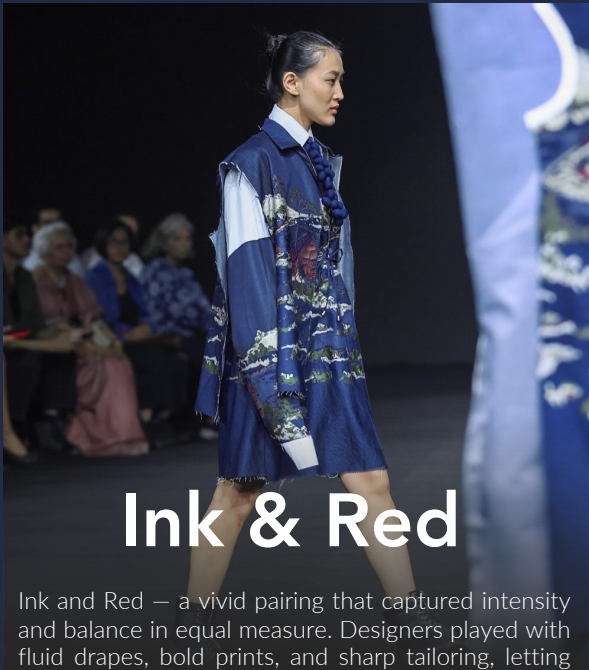


Gaach

Ankush Jain

Hatsibana

TIL



# Ink & Red

Ink and Red — a vivid pairing that captured intensity and balance in equal measure. Designers played with fluid drapes, bold prints, and sharp tailoring, letting the cool depth of blue meet the fervent energy of red. The palette exuded a fun spirit that rendered on casual to daywear perfectly.

PANTONE®  
19-3937

PANTONE®  
18-1453



Satya Paul

Aseem Kapoor

Siddhartha Bansal

Tarun Tahiliani



Anurag Gupta

# Porcelain & Blue

The finesse and artistry of ceramics made a fresh debut in milky whites and blue. Designers rendered the duo through textile play, floral motifs, and layered transparencies, on decluttered silhouettes that stood for simplicity and neat.

PANTONE®  
12-0715

PANTONE®  
13-0608

PANTONE®  
18-4022



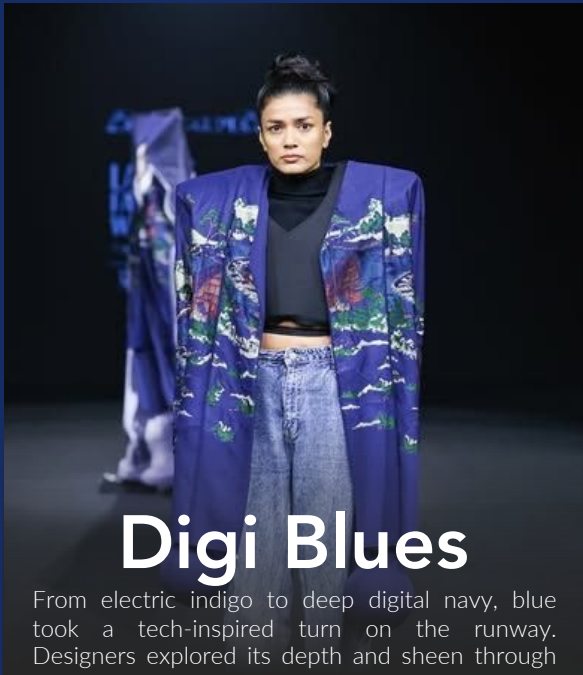
Gaach

SWGT

TIL

Anam hussain





Anurag Gupta

# Digi Blues

From electric indigo to deep digital navy, blue took a tech-inspired turn on the runway. Designers explored its depth and sheen through sculpted silhouettes, metallic threads and layered fabrics. The result was a palette that felt futuristic yet composed, capturing the essence of digital modernity with artisanal precision.

PANTONE®  
19-4053

PANTONE®  
19-3838



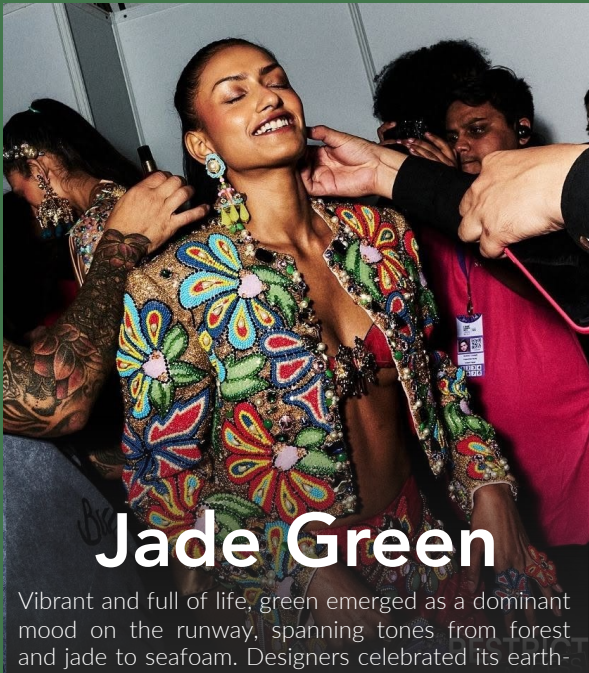
Taneiya Khanuja

Payal Jain

The Edit

Rina Dhaka

Disclaimer: Images displayed on the pages are not claimed to be created by or owned by the author and are provided by The Voice of Fashion for the sole purpose of representation of our review and analysis and meant for reference purpose only; not to be duplicated or published further in any manner (Read Terms of Use). The author is not responsible for the further distribution of this content beyond the intended parties. Confidentiality: The content is confidential and is not to be shared with or transferred to any third party or displayed publicly. Disclaimer: The PANTONE® Reference names and/or numbers are from the PANTONE FASHION, HOME + INTERIORS color system (a component of the PANTONE Textile Color System®). The colors shown here are on-screen simulations and may not match the PANTONE Color Standards. For accurate PANTONE Color Standards, refer to current editions of PANTONE FASHION, HOME + INTERIORS Swatch Cards. PANTONE is a trademark or registered trademark of Pantone LLC in the United States and/or other countries. Portions © Pantone LLC, 2020. Pantone's trademarks and copyrights used with the permission of Pantone LLC under License Agreement with ICH Creative Consulting LLP.



Siddhartha Bansal

# Jade Green

Vibrant and full of life, green emerged as a dominant mood on the runway, spanning tones from forest and jade to seafoam. Designers celebrated its earth-born energy through eclectic prints, fluid silhouettes, and artisanal layering. The palette carried a sense of renewal and revival, reflecting fashion's ongoing dialogue with nature and cultural vibrance.

PANTONE®  
19-5220

PANTONE®  
17-0145

PANTONE®  
16-2130



Itih

Aseem Kapoor

SWGT

Satya Paul





# Safeed & Black

Safeed and black took a renewed expression through structured tailoring, layered drapes, and playful surface detailing this season. Designers redefined monochrome by mixing craft-inspired accents with urban silhouettes, creating a a graphic yet graceful palette that balances edge and elegance.


PANTONE®  
19-0303

PANTONE®  
11-0601



Suneet Verma      Richa Khemka      Hatsibana      Ashish Soni

Disclaimer: Images displayed on the pages are not claimed to be created by or owned by the author and are provided by The Voice of Fashion for the sole purpose of representation of our review and analysis and meant for reference purpose only; not to be duplicated or published further in any manner (Read Terms of Use). The author is not responsible for the further distribution of this content beyond the intended parties. Confidentiality: The content is confidential and is not to be shared with or transferred to any third party or displayed publicly. Disclaimer: The PANTONE® Reference names and/or numbers are from the PANTONE FASHION, HOME + INTERIORS color system (a component of the PANTONE Textile Color System®). The colors shown here are on-screen simulations and may not match the PANTONE Color Standards. For accurate PANTONE Color Standards, refer to current editions of PANTONE FASHION, HOME + INTERIORS Swatch Cards. PANTONE is a trademark or registered trademark of Pantone LLC in the United States and/or other countries. Portions © Pantone LLC, 2020. Pantone's trademarks and copyrights used with the permission of Pantone LLC under License Agreement with ICH Creative Consulting LLP.



# Coal & Rare Metals

This season, black and gold returned as a statement of modern opulence. Designers fused heritage inspired detailing with contemporary cuts, giving the palette a fresh relevance. From festive couture to cocktail wear, the combination embodied power, allure, and evening elegance.

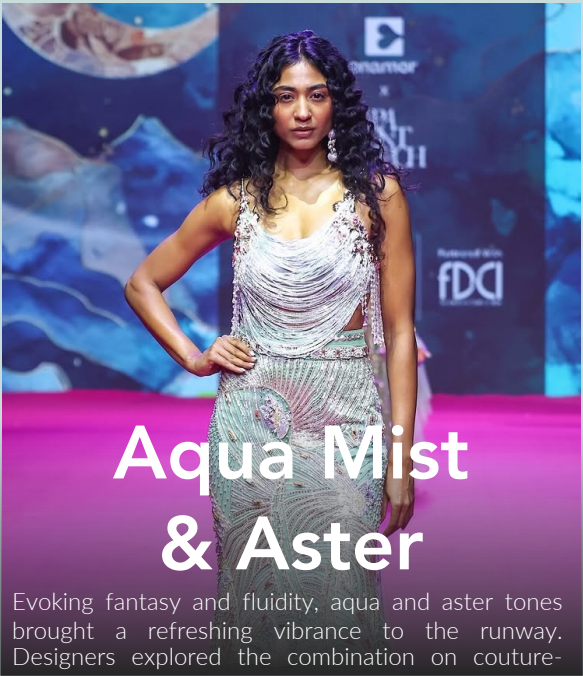
PANTONE®  
19-0303

PANTONE®  
20-0037

PANTONE®  
20-0008







# Aqua Mist & Aster

Evoking fantasy and fluidity, aqua and aster tones brought a refreshing vibrance to the runway. Designers explored the combination on couture-pieces that told stories. While ornate craftsmanship ruled this palette, digital printing played an equally important role in setting the mood.

PANTONE®  
12-5508

PANTONE®  
17-3323



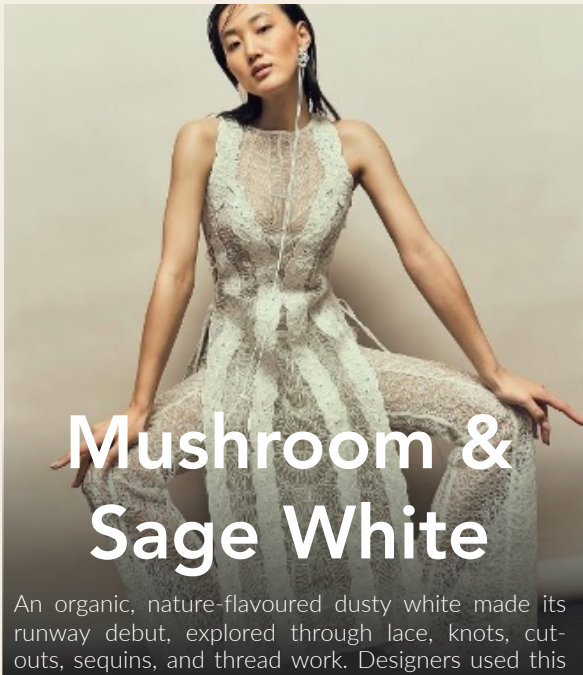
Samant Chauhan

Mahima Mahajan

Ankush Jain

Papa Don't Preach





# Mushroom & Sage White

Esse

An organic, nature-flavoured dusty white made its runway debut, explored through lace, knots, cut-outs, sequins, and thread work. Designers used this tone to evoke a nature-centric mood, reflecting a renewed bond with the earth through tactile, handcrafted textures.

PANTONE®  
11-0108

PANTONE®  
12-5404



Rina Dhaka

Samant Chauhan

TIL

SWGT

Disclaimer: Images displayed on the pages are not claimed to be created by or owned by the author and are provided by The Voice of Fashion for the sole purpose of representation of our review and analysis and meant for reference purpose only; not to be duplicated or published further in any manner (Read Terms of Use). The author is not responsible for the further distribution of this content beyond the intended parties. Confidentiality: The content is confidential and is not to be shared with or transferred to any third party or displayed publicly. Disclaimer: The PANTONE® Reference names and/or numbers are from the PANTONE FASHION, HOME + INTERIORS color system (a component of the PANTONE Textile Color System®). The colors shown here are on-screen simulations and may not match the PANTONE Color Standards. For accurate PANTONE Color Standards, refer to current editions of PANTONE FASHION, HOME + INTERIORS Swatch Cards. PANTONE is a trademark or registered trademark of Pantone LLC in the United States and/or other countries. Portions © Pantone LLC, 2020. Pantone's trademarks and copyrights used with the permission of Pantone LLC under License Agreement with ICH Creative Consulting LLP.



Anavila

# White, Gold & Silver

White, silver and dull gold evoked a mood of understated heirloom elegance on the runway. Designers embraced this subtly festive palette through crushed gold textures, woven borders, and minimal ornamentation, balancing restraint with regality.

PANTONE®  
11-0108

PANTONE®  
20-0021

PANTONE®  
20-0008



Anavila

Lakme India

Tarun Tahiliani

Taneiya Khanuja

Disclaimer: Images displayed on the pages are not claimed to be created by or owned by the author and are provided by The Voice of Fashion for the sole purpose of representation of our review and analysis and meant for reference purpose only; not to be duplicated or published further in any manner (Read Terms of Use). The author is not responsible for the further distribution of this content beyond the intended parties. Confidentiality: The content is confidential and is not to be shared with or transferred to any third party or displayed publicly. Disclaimer: The PANTONE® Reference names and/or numbers are from the PANTONE FASHION, HOME + INTERIORS color system (a component of the PANTONE Textile Color System®). The colors shown here are on-screen simulations and may not match the PANTONE Color Standards. For accurate PANTONE Color Standards, refer to current editions of PANTONE FASHION, HOME + INTERIORS Swatch Cards. PANTONE is a trademark or registered trademark of Pantone LLC in the United States and/or other countries. Portions © Pantone LLC, 2020. Pantone's trademarks and copyrights used with the permission of Pantone LLC under License Agreement with ICH Creative Consulting LLP.

## Disclaimer and Confidentiality:

Disclaimer: Images used herein belong to us or our licensor(s) The Voice of Fashion, as identified herein. Images used are for the sole purpose of representation of our review and analysis and meant for reference purpose only; not to be duplicated or published or used further in any manner. Images displayed on the pages from public sites are not claimed to be created by or owned by the author. All intellectual property in the content including but not limited to any text, photographs, images, designs, artwork and logos belongs to and is and shall be owned by us or our licensors or other copyright holders as applicable and cannot be reproduced, adapted, modified, displayed or distributed, unless expressly authorized by the owner thereof. The author is not responsible for the further distribution of this content beyond the intended parties. The content provided is a guide only and not intended to be prescriptive.

### Confidentiality:

The content is confidential and is meant only for internal purposes only and not to be shared with or transferred to any third party or displayed publicly. The report is our property, and the purchase thereof does not give you further rights, title or interest in or to the report or to the content thereof except to the extent expressly authorized herein and you may not otherwise reproduce, adapt, modify, display, perform or distribute the report or any part of it.

PANTONE® Disclaimer: The PANTONE® Reference names and/or numbers are from the PANTONE FASHION, HOME + INTERIORS color system (a component of the PANTONE Textile Color System®). The colors shown here are on-screen simulations and may not match the PANTONE Color Standards. For accurate PANTONE Color Standards, refer to current editions of PANTONE FASHION, HOME + INTERIORS Swatch Cards. PANTONE is a trademark or registered trademark of Pantone LLC in the United States and/or other countries. Portions © Pantone LLC, 2020. Pantone's trademarks and copyrights used with the permission of Pantone LLC under License Agreement with ICH Creative Consulting LLP.

For any enquiries, assistance, concerns or clarifications please write to [ichnext@ichcreative.com](mailto:ichnext@ichcreative.com)